

LANTA
ILCAM GROUP

FOR-ME

Solution

FOR-ME modular units

Beauty and function come in new forms to add the finishing touch to kitchen spaces and bathrooms.

With the FOR-ME modular units, the ILCAM Group leverages LANTA's specific know-how to present the market with a **finished product** conceived, developed and industrialized in-house, designed to fit in seamlessly with kitchen and bathroom furniture with its on-trend colour range and module sizes painstakingly chosen for optimal adaptability.



Mix and match at will.

With the modules from the FOR-ME collection, Lanta is pushing kitchen and bathroom boundaries, opening them up to a world of modular design freedom allowing you to put your personal stamp on each space.

Enhance furniture with streamlined elegance.

Integrating seamlessly into any type of fitted kitchen or bathroom setting with their elegantly pared-back design, the FOR-ME modules round out and enhance the functions of these interiors, injecting furnished spaces with a note of stylish linear purity.

Choose sustainability.

FOR-ME modules are made using eco-friendly material. The production process turning out these modules represents our very real contribution to a greener future.





Three finishes inspired by contemporary looks: style meets aesthetic adaptability.



PET grey mist



PET anthracite



PET aluminium



Straight configuration

FOR-KITCHEN



Straight configuration



FOR-KITCHEN



Corner configuration



FOR-KITCHEN

Island configuration

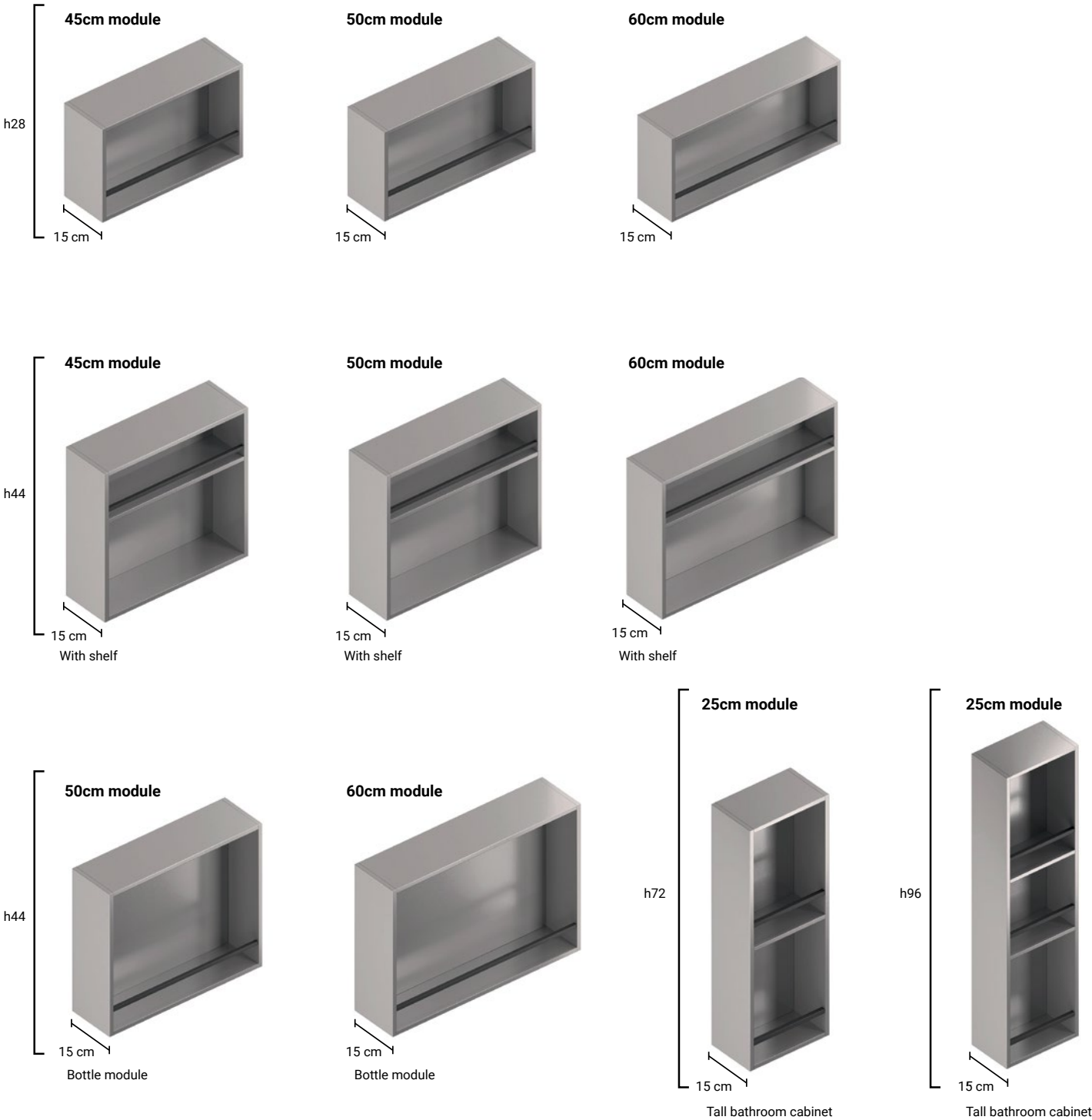


FOR-BATHROOM

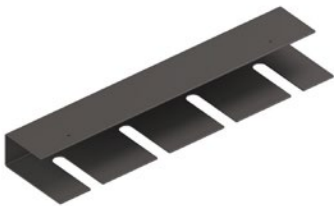


Extensive range of heights and depths to deliver the most advanced modular solution.

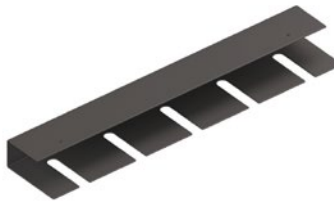
A wealth of module options adds to the functionality of the FOR-ME collection, offering a meticulously thought-out combination of sizes.



Stemware rack
45/50cm module



Stemware rack
60cm module



Under-cabinet LED lighting



A comprehensive series of accessories.

Completing the FOR-ME collection is a series of coordinated accessories, all in black to sit harmoniously alongside the finishes on the modules.

Kitchen utensil hooks
Attach them either inside the modules or underneath, integrated into a special wall-mounted unit.



Kitchen roll holder



FOR-ME modules and accessories come packaged, ready to be forwarded directly to the dealer or end consumer.

FOR-ME modules and accessories are delivered
in structured, particularly strong "courier proof" packaging,
ready to be sent on to their final destination.



LANTA:
experience
and innovation
you can rely on.

Backed by solid experience
and the strength that comes from
being a member of the ILCAM Group
- Europe's number 1 manufacturer of
components for the furniture industry
- LANTA is a go-to supplier for top
Italian and international brands.
With a reputation for offering reliable,
innovative and sustainable products,
LANTA is a company whose customer
satisfaction-centric approach informs
every strategic and manufacturing
decision.



Lanta S.r.l.

Via del Commercio, 1
31046 ODERZO (TV) - Italy
Tel. +39 0422 1786900
Fax +39 0422 1786940
info@lanta.it

www.lanta.it